

Envello Shadow Line⁺

Product specification guide

Shadow Line⁺ Board Details

Surface Composition:

Fire rated elastomer chemically melded to the core, with a UV stable 2K coating.



Core Composition:

Blend of natural minerals bonded in a polymer resin, with long fibre reinforcement.

Dimensions:

200mm (W) x 3600mm (L) x 18mm (D)

Weight:

8.3kg per board

Coverage:

1.53 boards per m²



Hand moulded and coloured



Impact and weather resistant



Wood free



Moisture resistant



Increased thermal performance



Easy to install



UV stability



Fire rated system

When fitted in accordance to our install guides



Lined Oak:
MCL360L



Burnt Cedar:
MCL360R



Antique Oak:
MCL360A



Golden Oak:
MCL360G



Smoked Oak:
MCL360D

Fire Performance

Millboard Envello Shadow Line⁺ cladding boards are crafted with fire retardants in the board composition, they have been tested to BS EN 13501-1 and have a classification of D-s3, d0. In general, Shadow Line⁺ cladding can be used on low-rise residential and some commercial properties that are below 11m in height and are more than 1m from the boundary. The responsibility for the cladding's suitability in the required location is to be determined by a certified building professional (building control, building insurance, fire officer, etc).

Millboard will not be held responsible for incorrect specification, application, or product installation in areas not in accordance with government guidance, in the UK or abroad. Current guidance should be gained from the government website relating to the geographical project location, England's building regulation Approved Document B can be found on - <https://www.gov.uk/government/publications/fire-safety-approved-document-b>

Thermal Conductivity

Envello Shadow Line/Shadow Line⁺ Cladding, Lambda Value Thermal Conductivity (W/mK): 0.108

Shadow Line+ Accessories



Shadow Line+ External Corner Profile

Width: 50mm
 Length: 3050mm
 Depth: 50mm
 Weight: 7.1kg
 Construction: Fire rated flexible polymer resin

Antique Oak: MCFE38A
 Smoked Oak: MCFE38D
 Golden Oak: MCFE38G
 Burnt Cedar: MCFE38R
 Limed Oak: MCFE38L



Shadow Line+ Internal Corner Profile

Width: 38mm
 Length: 3050mm
 Depth: 38mm
 Weight: 4.1kg
 Construction: Fire rated flexible polymer resin

Antique Oak: MCFH38A
 Smoked Oak: MCFH38D
 Golden Oak: MCFH38G
 Burnt Cedar: MCFH38R
 Limed Oak: MCFH38L



Envello Reveal Board

Width: 146mm
 Length: 3600mm
 Depth: 16mm
 Weight: 6.4kg
 Construction: Polymer resin core/
 Fire rated elastomer surface layer

Antique Oak: MCR146A
 Smoked Oak: MCR146D
 Golden Oak: MCR146G
 Burnt Cedar: MCR146R
 Limed Oak: MCR146L



Envello Coloured Head Screws

Size: 3.5 x 40mm
 Weight: 0.2kg per box
 Material: A2 Stainless Steel
 Pack Quantity: 100

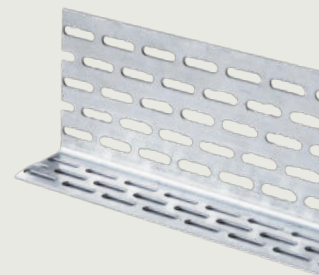
Antique Oak: FC40P100A
 Smoked Oak: FC40P100D
 Golden Oak: FC40P100G
 Burnt Cedar: FC40P100R
 Limed Oak: FC40P100L

Other Accessories and Products

Aluminium trims and fixings

To view the complete range of Envello Shadow Line+ products available please visit our website: millboard.co.uk/cladding/edging-trims-fascia

[View Accessories](#)



The information in this document was correct at the time of going to print, due to our culture of continuous improvement we reserve the right to change the information at any time without prior notice should further tests reveal different results.

The Millboard Company Ltd

UK Head Office, Castle Court, Bodmin Road, Coventry CV2 5DB

T: +44 (0)24 7643 9943 E: enquiries@millboard.co.uk

Company registered No. 06061318 VAT No. 980 616602 Brochure edition: 2023.v1.4

